



ALL-IN-ONE

www.ares.com

AURES
TOUCH THE DIFFERENCE



MOBILITY



KIOSK



PANELS PC



PRINTERS



DISPLAYS



ACCESSORIES

TWIST

versatile auto-rotative EPOS system with contemporary geometric design



Adaptable, multi-view POS

***TWIST** is a beautifully minimalistic designed, ultra-compact POS terminal where style has not been sacrificed for functionality nor functionality for style.*

A tempered glass touchscreen gives the unit a ruggedness in harsh environments whilst exposing the edge of the glass gives the TWIST a very different look. The simple design has all of the features of a standard POS system whilst its small footprint is ideally suited to where space saving is key!

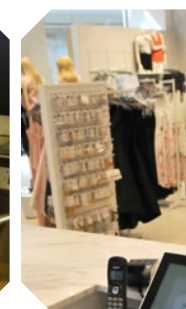
The superb 13.3" PCT multi-touch screen has been designed so that it can adapt itself into multiple viewing angles. Its versatility allows it to be positioned as a desktop style POS or recessed seamlessly into a sales counter. The fixed base allows the screen to auto rotate in one fluid motion, much like a tablet or smart phone. The unique silicon rubber membrane stand and cable cover ensures it is non-slip and also provides easy access to the cable management.

The motherboard of the TWIST - protected by the tough spill proof housing - incorporates the same technology as the AURES JAZZ range and supports a choice of three types of powerful, mobile and

fanless embedded processors. There are currently three versions of the AURES processor module which are the J1900, i3 and i5. There will be new versions of the module in the future.

Various peripherals can be connected to the device's multiple I/O ports including several USB 3.0 and Gigabit Ethernet which enables the user to build the TWIST into a smooth but totally adaptable POS. The back-cover clips off giving easy access to the mainboard, which can be quickly replaced for maintenance purposes without the need for any tools.

In the same respect as the AURES JAZZ range, the **TWIST** combines new technology which allows connectivity using a single USB-C cable, which is more than capable of conducting multiple functions such as the power, USB and video data.



TOUCH THE DIFFERENCE

TWIST



MODEL	TWIST		
Processors	Intel Bay Trail Celeron J1900	Intel Skylake i3-6100U	Intel Kaby Lake i5-7300U
Memory (RAM)	4GB DDR3L SODIMM up to 8GB	4GB DDR4 SODIMM up to 16GB	4GB DDR4 SODIMM up to 16GB
Graphic memory	Intel HD Graphics Core		
SSD	2 slots (SSD M.2, 1 x 128GB in standard)		
LCD	13.3" - 1920 x 1080 full HD - LED back-lighting		
Touch panel	Ultra flat (2.8 mm) and edgeless –multitouch projective capacitive technology		
Brightness	220 cd/m ²		

INPUT-OUTPUT PORTS	
Serial	2 x serial ports - 1 power supply (5V)
USB ports	6 x USB 3.0 ports with 2 on the side 2 x USB-C (one for the motherboard and the processor + one available)
LAN	10/100/1000Base-T
2 nd Screen	Supports HDMI, DVI, VGA and DisplayPort via USB-C
Audio	Integrated loudspeaker (1 x 2W)
Power supply	External + 19V 65W

VARIOUS			
EMI	CE/FCC Class A		
Security	LVD, external adaptor UL /c/us, CE, TUV, etc.		
Operating temperature	0~40°		
Front face	Dust and splash proof		
Colour	black		
Dimensions (L x D x H)	321.36 x 216.15 x 122.8 (in its vertical configuration)		
Weight (net/gross)	3 kg / 4 kg		
Positioning angle (auto-rotating base)	2 possible options (desk version (flat) or more vertical angle)		
Compatible OS	Windows 7/10, Linux, Android	Windows 7/10, Linux	Windows 10, Linux

OPTIONS	
MSR reader	
Addimat and/or Dallas readers	Can be positioned on the right side of the POS system
Biometric reader	For finger prints
Barcode reader	External
Customer display	20 characters x 2 lines (TFT) - multilingual with chinese
2 nd screen	External
WIFI	Internal, 802.11 ac and Bluetooth

Specifications are subject to change without notice - © AURES 2019