

Thermal printing up to 112mm for the Point-Of-Sale



CT-S4000/4000L

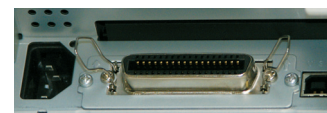
Get the full width

Print width up to 112mm -

The CT-S4000 offers 3 different paper width, 80, 82.5 and 112mm. All on standard thermal paper or labels. USB is default in addition to serial and parallel interface boards. This makes the CT-S4000 a future-proof investment.

Dual Interface -

USB is default in addition to serial or parallel interface boards. This makes the CT-S4000 a future-proof investment.



Internal Power Supply -

POS printers from Citizen offer an internal power supply. The CT-S4000 has a detachable one. Once taken off it is the smallest POS printer in its class.

CT-S4000 / 4000L

POS

Applications

- Receipt
- Coupon
- Ticket
- Daily report
- Kitchen
- Delivery slip
- Barcode
- Weigh scales
- Kiosk



Easy paper loading



Available in black



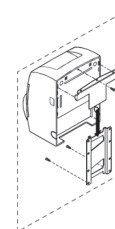
Vertical solution

Options

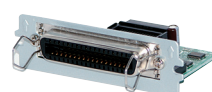
Lable type



Wall Mount kit



Interface cards



Parallel (TA66811-0)



Serial (TB66832-00F)



Ethernet (950053-00)

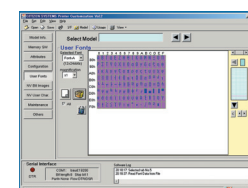
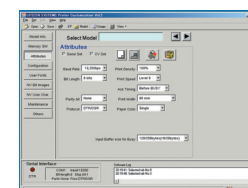
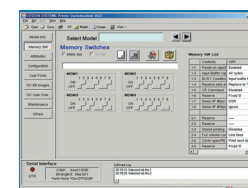
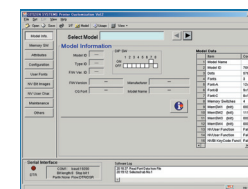


USB

Specifications

Printing method	Line thermal dot printing
Printing width	112mm paper: 104mm/832 dots, 82.5mm paper: 82.5mm/660 dots, 80mm paper: 72mm/ 576 dots
Dot pitch	8 x 8 dots/mm (203 dpi x 203 dpi)
Printing speed	Max. 150mm/sec (35.4 lines/sec)
Number of columns	112mm paper: Font A – 69 columns / Font B – 92 columns / Font C – 104 columns 82.5mm paper: Font A – 55 columns / Font B – 73 columns / Font C – 82 columns 80mm paper: Font A – 48 columns, Font B – 64 columns / Font C – 72 columns
Character size (WxH)	Font A: 1.25 x 3.00mm (12 x 24 dots) Font B: 0.88 x 2.13mm (9 x 17 dots) Font C: 0.88 x 2.00mm (8 x 16 dots)
Character table	Code page 437, 850, 852, 857, 858, 860, 863, 864, 865, 866, Katakana, WPC1252 , Thai code 18
Barcode type	UPC-A/E, JAN (EAN)-13/8, ITF, Code 39, Code 128, CODABAR, Code 93, PDF-417 (Label type only)
Line spacing	4.23mm (1/6 inch); can be set by command.
Paper	Roll paper: 112 / 82.5 / 80mm x Ø102mm (max.) Thickness: 0.065 – 0.150mm, Label paper: 112mm x Ø102mm (max.) Thickness: 0.150mm (max), Label width: 108mm (max.), Label length: 25mm/pc (min.)
Interface	Parallel (IEEE 1284) & USB, Serial (RS-232C) & USB
Input buffer	4K bytes / 45 bytes
NV user memory	384K bytes
Drawer kick-out	2 Drawers
Power supply	Input: AC 100-240V, 50/60 Hz, 150VA Output: DC24V, 2A DC 24V±7% (DC power supply type)
Weight	AC power type; 2.1kg / DCP power type: 1.9kg
Dimensions (W x D x H)	177 x 213 x 147mm
Operating environment	5~40°C, 10~90% RH (No condensation)
Storage environment	-20~60°C, 10~90% RH (No condensation)
Reliability	Main unit: 20,000,000 lines, Thermal head: 100,000,000 pulses or 100km Auto cutter: 1,000,000 cuts
EMC and safety standards	UL, C-UL, FCC Class A, TUV-GS, CE marking, CCC

Customization Software



Features



- 150mm/sec high-speed printing
- 112/82.5/80mm selectable paper width
- Easy paper loading
- Cutter (full/partial)
- Larger paper roll capability as Ø102mm
- Optional interface cards
- USB is default in addition to Serial or Parallel interface board
- Built-in Power Supply
- Black mark function (option)
- Bitmap data registration (NV memory)
- Cash drawer kick-out
- Barcode printing
- ESC/POS compatibility
- Page mode
- Two color printing
- Smoothing font
- Label printing (CT-S4000L)
- Available in white or black
- Driver: Windows2000/XP/Vista/2003 Server, OPOS 1.8, CUPS

Type Classification

CT-S4000 DC RS E BK L
1) 2) 3) 4) 5) 6)

1) **Model type**
CT-S4000

2) **Power Supply**
None: AC power type
(built-in Power supply)
DC: DC power supply type

3) **Interface**
PA: Parallel (IEEE1284) & USB
RS: Serial (RS-232C) & USB
UB: USB only (option)

4) **Character set, AC cable**
U: USA
E: Europe

5) **Body case color**
WH: Cool white
BK: Black

6) **Label/Black mark**
None: Standard (No sensor type)
L: Label sensor type
M: Black mark sensor type



800 729 0236
www.logiscenter.us



0241 9550 9225
www.logiscenter.de



01 82 88 44 70
www.logiscenter.fr



020 3318 8265
www.logiscenter.co.uk



0720 115814
www.logiscenter.at



02 58 80 583
www.logiscenter.be



911 433 048
www.logiscenter.com



02 4792 1697
www.logiscenter.it



308 800 842
www.logiscenter.pt

About LOGISCENTER

Logiscenter is the leading provider of automatic identification and data capture equipments. Our products include barcode printing and reading devices, mobile computing devices, wireless access points, identification cards, and consumables.

Reasons to work with us

Our customers come first. Our objective is not only selling our products but also holding a long-lasting relationship with our customers, based on the benefits and advantages we create for you and your company.

The best brands. We offer products from the best manufacturers worldwide.

Expert technical support team. Our support staff are experts in the products we sell. But not just the products, they can tell you the best solution for your particular problem or need.

Largest stock. We have a permanent stock of more than 60,000 products.

Same-day shipping. For all orders placed and confirmed before 16:00 on working days.

Best prices. With Logiscenter, you can be sure that you are paying a fair price for your products, we will not overcharge you.

Easy returns. Damaged or defective products can be returned easily, for an exchange or reimbursement.



All Brands Technical Service

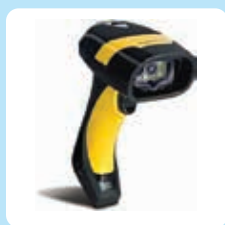
Our Brands



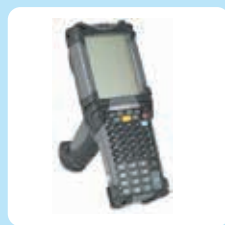
Solutions for: Industry • Consumer • Mobility Transportation and Logistics • Retail • Health



Label printers



Barcode readers



Data terminals & PDA



PVC card printers



RFID



Consumables
(labels, ribbons, PVC cards)